

## Relay Valves

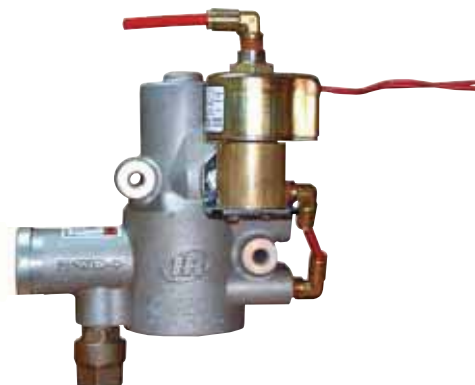
Ingersoll-Rand Relay Valves provide immediate response to assure Air Starter disengagement and prevent damage to the pinion or flywheel ring gear. The aluminum die cast housing resists abrasion and corrosion while the stainless steel piston return spring will not rust from moisture in the air line.



SRV150



SRV150SS



SRV125F

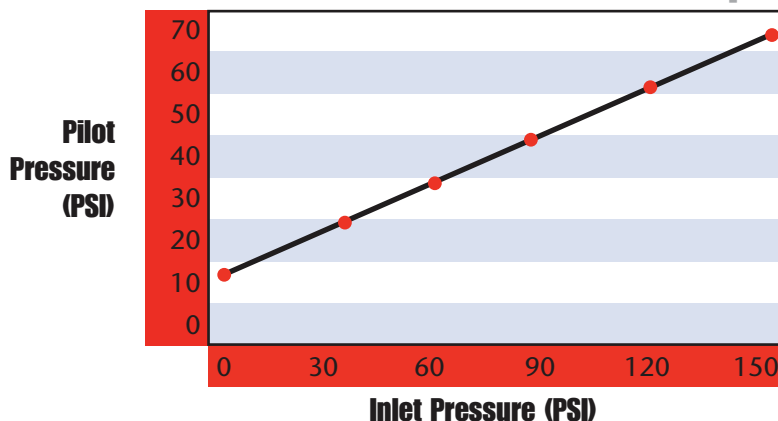
### Specifications

- Maximum Operating Pressure = 225 psi (15.5 bar)
- Operating Temperature Range = -20 to 250°F (-29 to 121°C)
- Flow/Pressure Drop shown on CSR-352:  $C_v = 28.5$

### Specifications

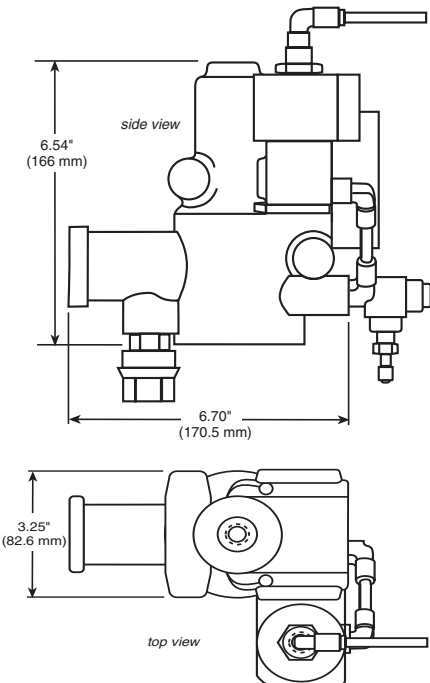
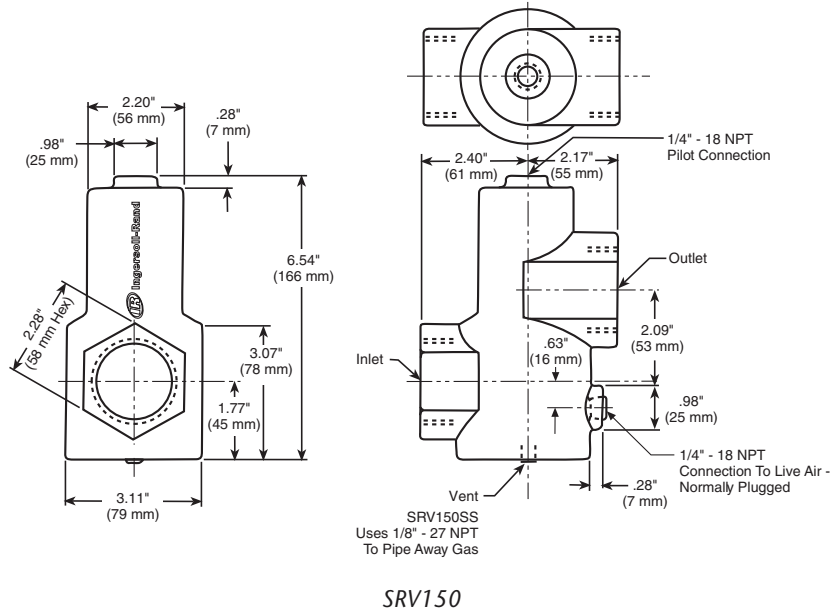
| IR Part Number | NPT Size Inlet – Outlet | Weight – lb (kg) | Description   |
|----------------|-------------------------|------------------|---|
| SRV100         | 1" – 1"                 | 3.10 (1.41)      | 3BMG, 5BMG, SS175G Relay Valve                      |
| SRV125         | 1-1/4" – 1-1/4"         | 2.90 (1.32)      | 150BM, SS350G, 150T Relay Valve                     |
| SRV125T        | 1-1/4" – 1-1/4"         | 2.90 (1.32)      | 150BM, SS350G, 150T Relay Valve for Transportation  |
| SRV150         | 1-1/2" – 1-1/2"         | 2.70 (1.22)      | SS800, ST700, ST900, ST600 Relay Valve              |
| SRV150SS       | 1-1/2" – 1-1/2"         | 7.15 (3.24)      | SS800, ST700, ST900 Relay Valve for Natural Gas Use |
| SRV125F        | 1-1/4" Flanged          | 7.40 (3.36)      | 150T/150BM Transportation Relay/Solenoid Valve      |

#### Inlet Pressure vs. Pilot Pressure to Open



Relay Valves

Relay Valves DIMENSIONS



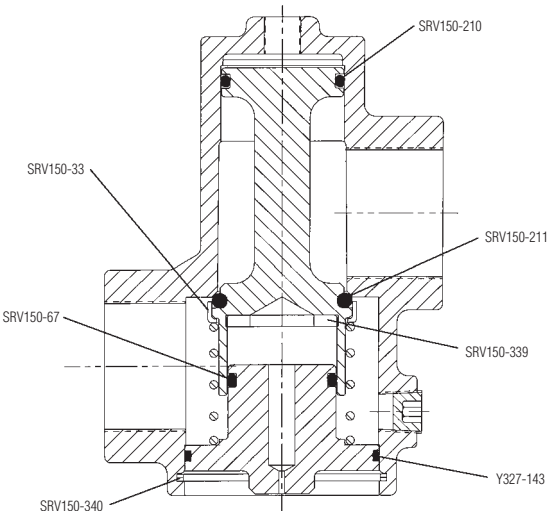
Relay Valves Genuine Ingersoll-Rand Replacement Kits

Tune Up Kit  
Part Number

Description

SRV150-TK3

For use with SRV100, SRV125, SRV125T, SRV150, and SRV150SS Relay Valves



Cross-Section of SRV150-TK3 Part Location



SRV-TK3 Parts